

SUPERVISION THIS MAP WAS DRAWN FROM AN ACTUAL LAND SURVEY USING DOCUMENTS OF RECORD AS SHOWN ON THIS MAP AND THAT THE ERROR OF CLOSURE IS 1 : 10,000 AS CALCULATED BY LATITUDES AND DEPARTURES. THAT THIS MAP WAS PREPARED IN ACCORDANCE WITH G.S. 47-30 AS AMENDED. NO DETERMINATION OTHER THAN AS IS SHOWN ON THIS MAP HAS BEEN MADE ABOUT G.S. 47-30, SECTION 3, (7), (8), (9), WITHIN MY HAND AND SEAL THIS 8TH DAY OF APRIL, 1985.

HOOD L. RICHARDSON, R.L.S. L - 2522
WOOD L. RICHARDSON

DANIEL LEE SMITH
D.B. 988, P. 981

DANNY R. SMITH
D.B. 946, P. 71

FRANK R. SQUIRES
MARGE E. SQUIRES
D.B. 949, P. 902

LEGEND

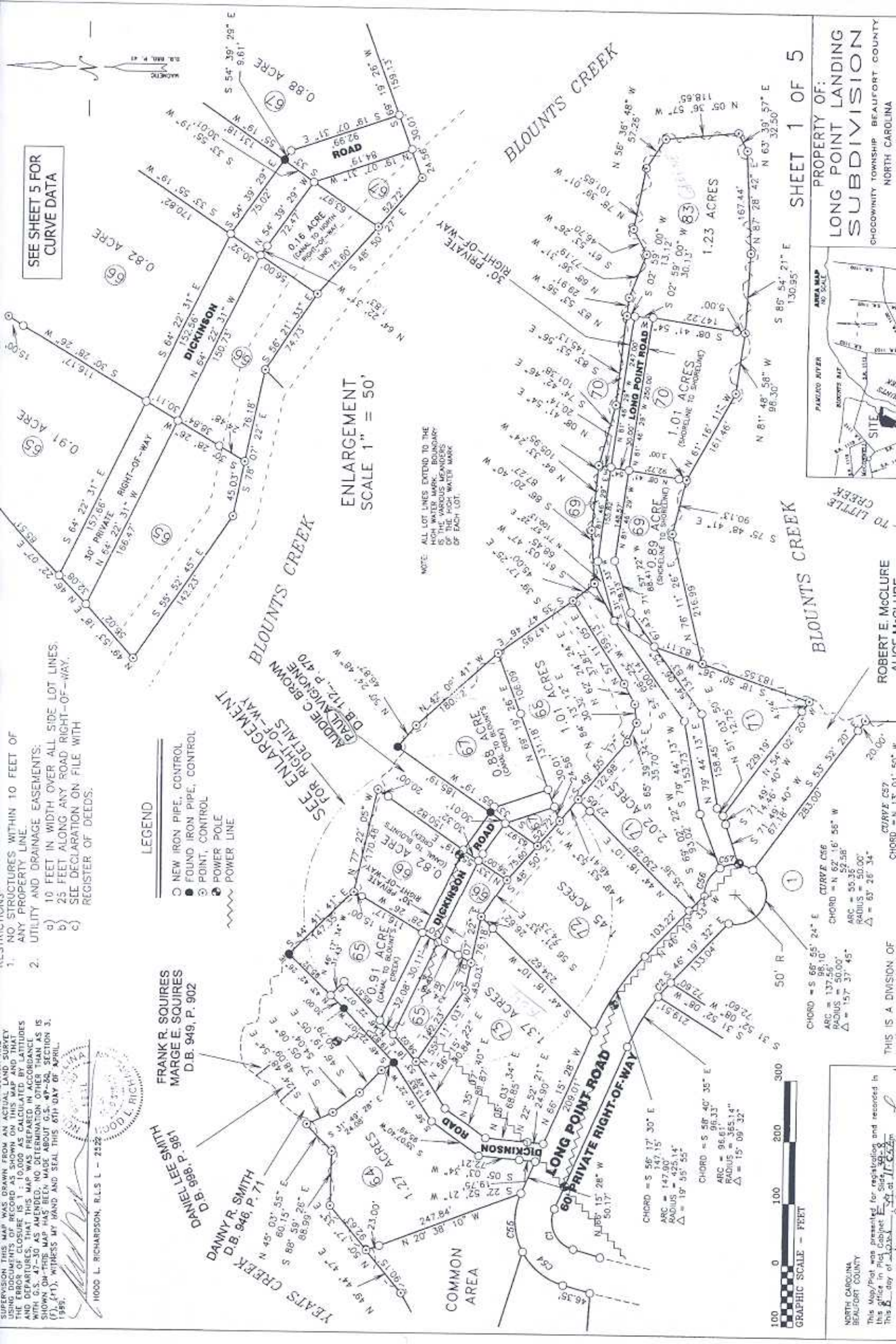
- NEW IRON PIPE, CONTROL
- FOUND IRON PIPE, CONTROL
- POINT, CONTROL
- POWER POLE
- ~ POWER LINE

SEE ENLARGEMENT FOR DETAILS OF ADJACENT BROWN PALM AVENUE DR. 112, P. 470

SEE SHEET 5 FOR CURVE DATA

ENLARGEMENT SCALE 1" = 50'

NOTE: ALL LOT LINES EXTEND TO THE HIGH WATER MARK. BOUNDARY IS THE VARIOUS MEANDERS OF THE HIGH WATER MARK OF EACH LOT.



CHORD = 5 66' 55" 24" E
ARC = 137' 56"
RADIUS = 50.00'
Δ = 157' 37" 45"

CHORD = 5 66' 55" 24" E
ARC = 137' 56"
RADIUS = 50.00'
Δ = 157' 37" 45"

CHORD = 5 66' 55" 24" E
ARC = 137' 56"
RADIUS = 50.00'
Δ = 157' 37" 45"

CHORD = 5 66' 55" 24" E
ARC = 137' 56"
RADIUS = 50.00'
Δ = 157' 37" 45"

CHORD = 5 66' 55" 24" E
ARC = 137' 56"
RADIUS = 50.00'
Δ = 157' 37" 45"

CHORD = 5 66' 55" 24" E
ARC = 137' 56"
RADIUS = 50.00'
Δ = 157' 37" 45"

CHORD = 5 66' 55" 24" E
ARC = 137' 56"
RADIUS = 50.00'
Δ = 157' 37" 45"

PROPERTY OF:
LONG POINT LANDING SUBDIVISION
CHOCOWINY TOWNSHIP, BEAUFORT COUNTY, NORTH CAROLINA



TO LITTLE CREEK

TO BLOUNTS CREEK

TO BLOUNTS CREEK

THIS IS A DIVISION OF
CURVE CS7
CHORD = N 13° 01' 50" W
ARC = 20' 00"
RADIUS = 50' 00"
Δ = 65° 26' 34"

ROBERT E. MCCLURE
ALICIA M. MCCLURE