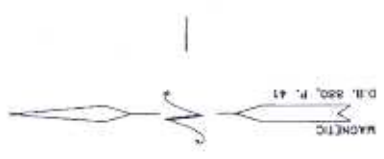




TO BLAUNTS CREEK

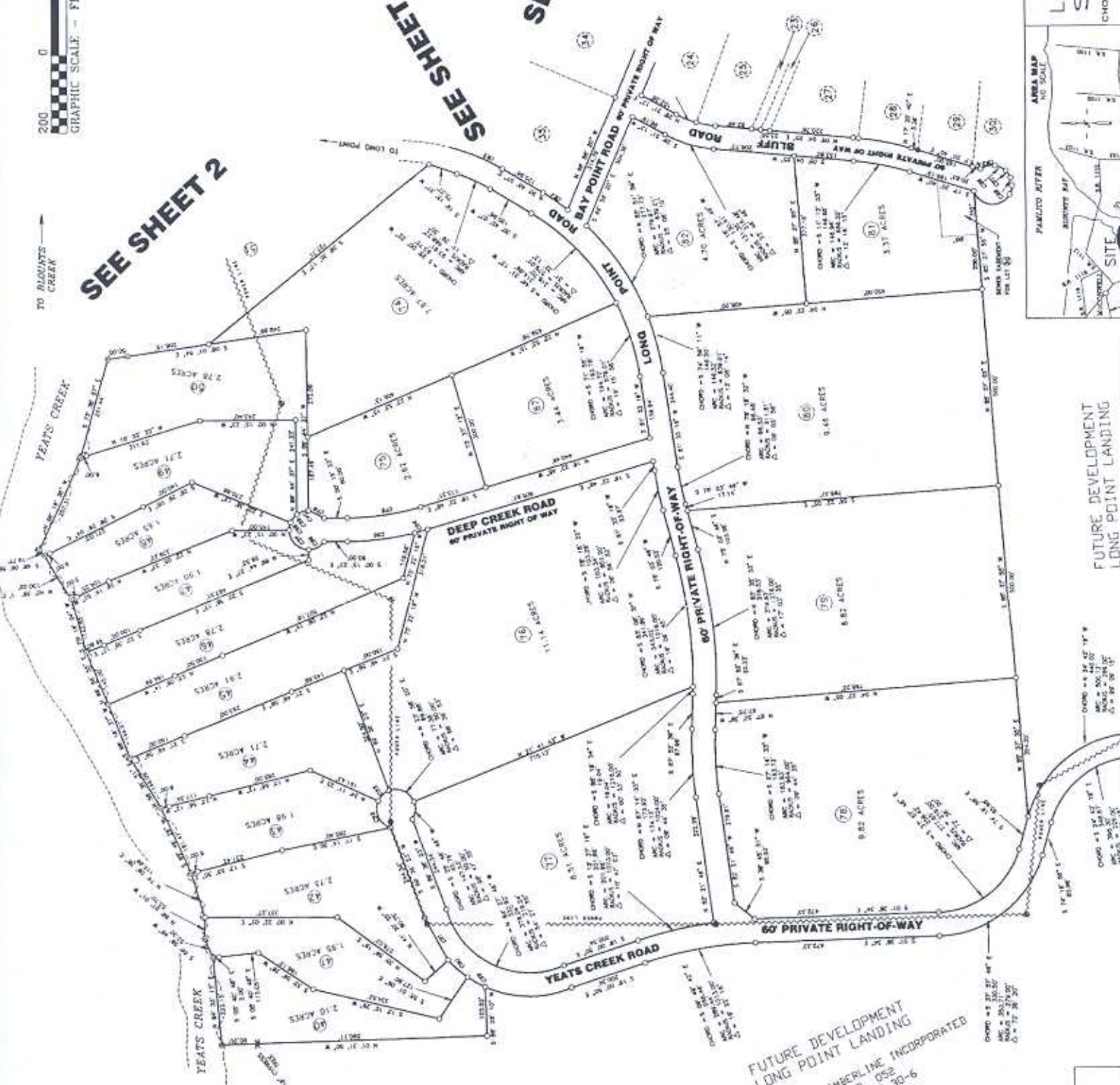


SEE SHEET 2

SEE SHEET 2

SEE SHEET 4

SEE SHEET 5 FOR CURVE DATA



I, HOOD L. RICHARDSON, CERTIFY THAT UNDER MY DIRECTION AND SUPERVISION THIS MAP WAS DRAWN FROM AN ACTUAL LAND SURVEY USING DOCUMENTS OF RECORD AS SHOWN AND AS CALCULATED BY LATITUDES AND DEPARTURES; THAT THIS MAP WAS PREPARED IN ACCORDANCE WITH S.L. 47-20 AS AMENDED; NO DETERMINATION OTHER THAN AS IS SHOWN ON THIS MAP HAS BEEN MADE; THIS 8TH DAY OF APRIL, 1974.

HOOD L. RICHARDSON, S.L.S. L. - 2522

- LEGEND
- MET WITH APPL. CONTROL
 - POINT CONTROL
 - ◆ POWER POLE
 - POWER LINE

THIS IS A DIVISION OF THE LAND IN AN AREA OF THE COUNTY THAT IS NOT REGULATED

FUTURE DEVELOPMENT
LONG POINT LANDING
NORTH CAROLINA TIMBERLINE INCORPORATED
D.B. 1116, P. 052
PLAT CAB. F. SLIDE 30-6

NOTE: ALL LOT LINES EXTEND TO THE HIGH WATER MARK. BOUNDARY IS THE VARIOUS MARKERS OF EACH LOT.

- RESTRICTIONS WITHIN 10 FEET OF
1. NO STRUCTURES WITHIN 10 FEET OF
 2. UTILITY AND DRAINAGE EASEMENTS
 3. 10 FEET IN WIDTH OVER ALL SIDE LOT LINES
 4. 25 FEET WIDE WITH POLE PROHIBITION
 5. RECORDS OF RECORDS

SHEET 3 OF 5
PROPERTY OF:
LONG POINT LANDING
SUBDIVISION
CHOCOWHITY TOWNSHIP BEAUFORT COUNTY
NORTH CAROLINA



FUTURE DEVELOPMENT
LONG POINT LANDING

NORTH CAROLINA
BEAUFORT COUNTY